

# Times New Roman

Times New Roman is a serif typeface commissioned by the British newspaper The Times in 1931, created by Victor Lardent at the English branch of Monotype - [Wikipedia](#)

## January 2012

Sun 1	Fri 13	Wed 25
Mon 2	Sat 14	Thu 26
Tue 3	Sun 15	Fri 27
Wed 4	Mon 16	Sat 28
Thu 5	Tue 17	Sun 29
Fri 6	Wed 18	Mon 30
Sat 7	Thu 19	Tue 31
Sun 8	Fri 20	
Mon 9	Sat 21	
Tue 10	Sun 22	
Wed 11	Mon 23	
Thu 12	Tue 24	

**modRed**



**ModRed Design**

Print • Web Design • Branding



[www.modred.co.uk](http://www.modred.co.uk)

[info@modred.co.uk](mailto:info@modred.co.uk)

# Helvetica

Helvetica was developed in 1957 by Max Miedinger with Eduard Hoffmann at the Haas'sche Schriftgiesserei (Haas type foundry) of Münchenstein, Switzerland - [Wikipedia](#)

## February 2012

Wed 1	Mon 13	Sat 25
Thu 2	Tue 14	Sun 26
Fri 3	Wed 15	Mon 27
Sat 4	Thu 16	Tue 28
Sun 5	Fri 17	Wed 29
Mon 6	Sat 18	Thu 01
Tue 7	Sun 19	Fri 02
Wed 8	Mon 20	  <b>ModRed Design</b> Print • Web Design • Branding  <a href="http://www.modred.co.uk">www.modred.co.uk</a>  <a href="mailto:info@modred.co.uk">info@modred.co.uk</a>
Thu 9	Tue 21	
Fri 10	Wed 22	
Sat 11	Thu 23	
Sun 12	Fri 24	

# Impact

Impact is a realist sans-serif typeface designed by Geoffrey Lee in 1965 and released by the Stephenson Blake foundry - featuring ultra-thick strokes & compressed letterspacing - [Wikipedia](#)

## March 2012

Thu 1	Tue 13	Sun 25
Fri 2	Wed 14	Mon 26
Sat 3	Thu 15	Tue 27
Sun 4	Fri 16	Wed 28
Mon 5	Sat 17	Thu 29
Tue 6	Sun 18	Fri 30
Wed 7	Mon 19	Sat 31
Thu 8	Tue 20	
Fri 9	Wed 21	
Sat 10	Thu 22	
Sun 11	Fri 23	
Mon 12	Sat 24	

**ModRed**



**ModRed Design**

Print • Web Design • Branding

[www.modred.co.uk](http://www.modred.co.uk)


[info@modred.co.uk](mailto:info@modred.co.uk)


# Century Gothic

Century Gothic is a geometric sans-serif typeface designed for Monotype Imaging in 1991 - as a version of the successful Futura typeface - for the Lanston Monotype Company - [Wikipedia](#)

## April 2012

Sun 1	Fri 13	Wed 25
Mon 2	Sat 14	Thu 26
Tue 3	Sun 15	Fri 27
Wed 4	Mon 16	Sat 28
Thu 5	Tue 17	Sun 29
Fri 6	Wed 18	Mon 30
Sat 7	Thu 19	Tue 1
Sun 8	Fri 20	
Mon 9	Sat 21	
Tue 10	Sun 22	
Wed 11	Mon 23	
Thu 12	Tue 24	





**ModRed Design**

Print • Web Design • Branding

[www.modred.co.uk](http://www.modred.co.uk)

[info@modred.co.uk](mailto:info@modred.co.uk)

# Eurostile

The Eurostile font is a geometric sans-serif typeface designed by Aldo Novarese in 1962 - originally made for one of the best-known Italian foundries, Nebiolo, in Turin - [Wikipedia](#)

## May 2012

Tue 1	Sun 13	Fri 25
Wed 2	Mon 14	Sat 26
Thu 3	Tue 15	Sun 27
Fri 4	Wed 16	Mon 28
Sat 5	Thu 17	Tue 29
Sun 6	Fri 18	Wed 30
Mon 7	Sat 19	Thu 31
Tue 8	Sun 20	
Wed 9	Mon 21	
Thu 10	Tue 22	
Fri 11	Wed 23	
Sat 12	Thu 24	

The logo for ModRed Design, featuring the word 'ModRed' in a stylized font. 'Mod' is in a dark purple color and 'Red' is in a dark red color.

**ModRed Design**

Print • Web Design • Branding

[www.modred.co.uk](http://www.modred.co.uk)

[info@modred.co.uk](mailto:info@modred.co.uk)

# Gill Sans

Gill Sans is a sans-serif typeface designed by Eric Gill. Designed in 1926 when Douglas Cleverdon opened a bookshop in Bristol, where Eric Gill painted the fascia in sans-serif capitals - **Wikipedia**

## June 2012

Fri 1	Wed 13	Mon 25
Sat 2	Thu 14	Tue 26
Sun 3	Fri 15	Wed 27
Mon 4	Sat 16	Thu 28
Tue 5	Sun 17	Fri 29
Wed 6	Mon 18	Sat 30
Thu 7	Tue 19	Sun 1
Fri 8	Wed 20	
Sat 9	Thu 21	
Sun 10	Fri 22	
Mon 11	Sat 23	
Tue 12	Sun 24	

**modRed**



**ModRed Design**

Print • Web Design • Branding

[www.modred.co.uk](http://www.modred.co.uk)

[info@modred.co.uk](mailto:info@modred.co.uk)

# Georgia

Georgia is a transitional serif typeface designed in 1993 by Matthew Carter and hinted by Tom Rickner as the serif companion to the first Microsoft sans serif screen font, Verdana - [Wikipedia](#)

## July 2012

Sun 1	Fri 13	Wed 25
Mon 2	Sat 14	Thu 26
Tue 3	Sun 15	Fri 27
Wed 4	Mon 16	Sat 28
Thu 5	Tue 17	Sun 29
Fri 6	Wed 18	Mon 30
Sat 7	Thu 19	Tue 31
Sun 8	Fri 20	
Mon 9	Sat 21	
Tue 10	Sun 22	
Wed 11	Mon 23	
Thu 12	Tue 24	

**ModRed**



**ModRed Design**

Print • Web Design • Branding

[www.modred.co.uk](http://www.modred.co.uk)

[info@modred.co.uk](mailto:info@modred.co.uk)

# Kuenstler Script

Kuenstler Script was designed in 1902 by the in-house studio at the D Stempel AG foundry. Originally titled Künstlerschreibschrift which translates to 'handwriting of artists' - **Wikipedia**

## August 2012

Wed 1	Mon 13	Sat 25
Thu 2	Tue 14	Sun 26
Fri 3	Wed 15	Mon 27
Sat 4	Thu 16	Tue 28
Sun 5	Fri 17	Wed 29
Mon 6	Sat 18	Thu 30
Tue 7	Sun 19	Fri 31
Wed 8	Mon 20	
Thu 9	Tue 21	
Fri 10	Wed 22	
Sat 11	Thu 23	
Sun 12	Fri 24	

**ModRed**



**ModRed Design**

Print • Web Design • Branding

[www.modred.co.uk](http://www.modred.co.uk)

[info@modred.co.uk](mailto:info@modred.co.uk)

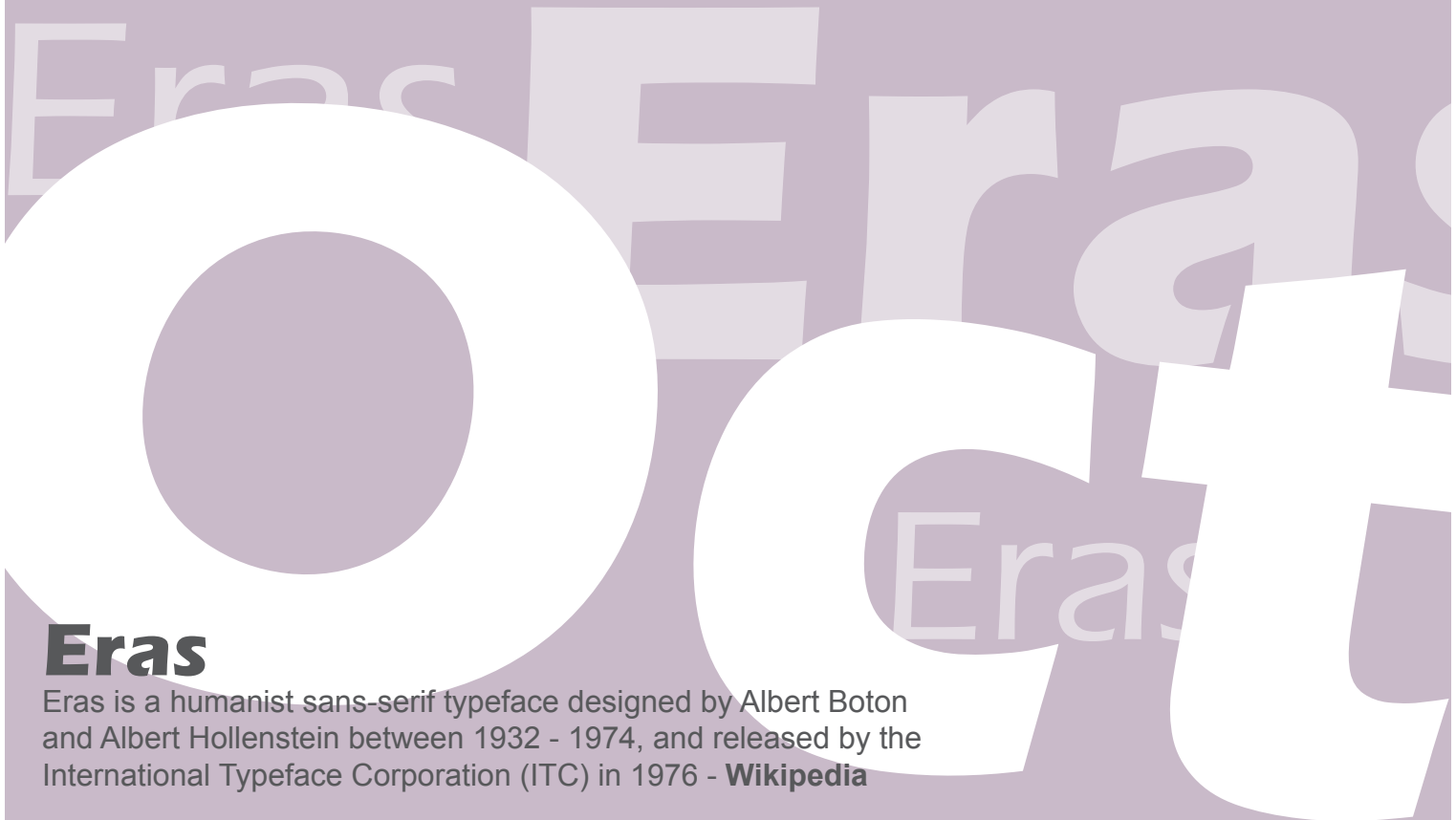


# Arial

The Arial typeface was designed in 1982 by a 10-person team, led by Robin Nicholas and Patricia Saunders, for Monotype Typography - sometimes displayed in software as Arial MT - **Wikipedia**

## September 2012


Sat 1	Thu 13	Tue 25
Sun 2	Fri 14	Wed 26
Mon 3	Sat 15	Thu 27
Tue 4	Sun 16	Fri 28
Wed 5	Mon 17	Sat 29
Thu 6	Tue 18	Sun 30
Fri 7	Wed 19	Mon 1
Sat 8	Thu 20	<p><b>ModRed Design</b> Print • Web Design • Branding</p> <p><a href="http://www.modred.co.uk">www.modred.co.uk</a></p> <p><a href="mailto:info@modred.co.uk">info@modred.co.uk</a></p>
Sun 9	Fri 21	
Mon 10	Sat 22	
Tue 11	Sun 23	
Wed 12	Mon 24	



# Eras

Eras is a humanist sans-serif typeface designed by Albert Boton and Albert Hollenstein between 1932 - 1974, and released by the International Typeface Corporation (ITC) in 1976 - [Wikipedia](#)

## October 2012

Mon 1	Sat 13	Thu 25
Tue 2	Sun 14	Fri 26
Wed 3	Mon 15	Sat 27
Thu 4	Tue 16	Sun 28
Fri 5	Wed 17	Mon 29
Sat 6	Thu 18	Tue 30
Sun 7	Fri 19	Wed 31
Mon 8	Sat 20	  <b>ModRed Design</b> Print • Web Design • Branding  <a href="http://www.modred.co.uk">www.modred.co.uk</a>  <a href="mailto:info@modred.co.uk">info@modred.co.uk</a>
Tue 9	Sun 21	
Wed 10	Mon 22	
Thu 11	Tue 23	
Fri 12	Wed 24	

# Franklin Gothic

Franklin Gothic and its related faces, are realist sans-serif typefaces originated by Morris Fuller Benton in 1902. "Gothic" is an increasingly archaic term meaning sans-serif - [Wikipedia](#)

## November 2012

Thu 1	Tue 13	Sun 25
Fri 2	Wed 14	Mon 26
Sat 3	Thu 15	Tue 27
Sun 4	Fri 16	Wed 28
Mon 5	Sat 17	Thu 29
Tue 6	Sun 18	Fri 30
Wed 7	Mon 19	Sat 1
Thu 8	Tue 20	
Fri 9	Wed 21	
Sat 10	Thu 22	
Sun 11	Fri 23	
Mon 12	Sat 24	

The logo for ModRed Design, featuring the word "ModRed" in a bold, sans-serif font. The "m" is purple, "od" is black, and "Red" is red.

**ModRed Design**

Print • Web Design • Branding



[www.modred.co.uk](http://www.modred.co.uk)

[info@modred.co.uk](mailto:info@modred.co.uk)

# Baskerville

Baskerville is a transitional serif typeface designed in 1757 by John Baskerville in Birmingham. Baskerville is positioned between the old styles of Caslon, and the modern of Bodoni and Didot - [Wikipedia](#)

## December 2012

Sat 1	Thu 13	Tue 25
Sun 2	Fri 14	Wed 26
Mon 3	Sat 15	Thu 27
Tue 4	Sun 16	Fri 28
Wed 5	Mon 17	Sat 29
Thu 6	Tue 18	Sun 30
Fri 7	Wed 19	Mon 31
Sat 8	Thu 20	  <b>ModRed Design</b> Print • Web Design • Branding  <a href="http://www.modred.co.uk">www.modred.co.uk</a>  <a href="mailto:info@modred.co.uk">info@modred.co.uk</a>
Sun 9	Fri 21	
Mon 10	Sat 22	
Tue 11	Sun 23	
Wed 12	Mon 24	